

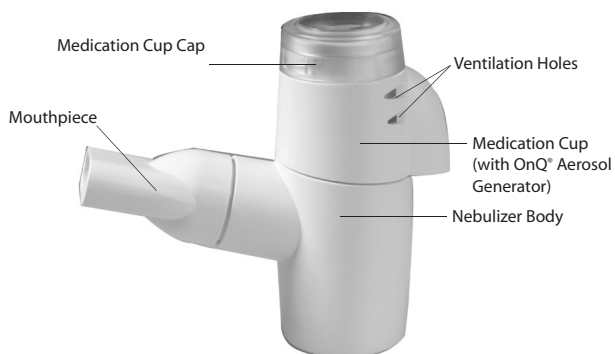
OPEN & READ ALL INSTRUCTIONS BEFORE OPERATING!

evo



Aeroneb[®] Go
Micropump Nebulizer

Quick Start Card



Battery Powered Controller
with detachable power cord
- Model 7010 -



AC/DC Controller
with attached power cord
- Model 7030 -

IMPORTANT CAUTION

As with any mechanical device, this product may become unusable due to an electrical outage, battery depletion, or mechanical failure. We recommend that you have spare batteries and have a backup device available to you. **If this product is being used to treat a life threatening condition, a backup device is necessary.**

IMPORTANT CLEANING INFORMATION FOR ALL MODELS

To optimize the performance and life expectancy of your Aeroneb Go device, follow the cleaning instructions carefully as instructed on page 10 of your Aeroneb Go Instruction Manual.

NOTE: Removal and the improper insertion of the retaining ring from the underside of the medication cup may cause the unit to leak or malfunction.

NOTE: Please read all instructions before using. Refer to your Aeroneb[®] Go Nebulizer Instruction Manual for more complete cleaning instructions.

To order replacement parts or accessories, visit your local home medical equipment dealer or pharmacy.

If you have any questions or problems regarding your Aeroneb[®] Go nebulizer, contact your local home medical equipment dealer or pharmacy.

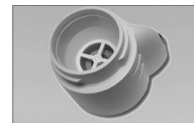
Your Aeroneb[®] Go was tested and inspected at the factory and is a premium device that has a life expectancy of at least one year (730 treatments) with proper care and cleaning. Lack of proper care and cleaning, disassembly of the retaining ring or misuse will void the warranty.

BEFORE ANY OPERATION

Before you begin any operation, continue to the *Quick Start Instruction Guide* read thoroughly and follow the operating instructions that apply to your specific model.

QUICK START INSTRUCTION GUIDE BEGINS HERE

TO ASSEMBLE NEBULIZER UNIT



STEP 1

Before you begin, run the Medication Cup under hot water, then tap the cup slightly.



STEP 2

Connect the Medication Cup (containing the OnQ[®] Aerosol Generator) to the Nebulizer Body.

NOTE: Make sure the Aeroneb Go is unplugged before you add medication to the Medication Cup.



STEP 3

Fill the Medication Cup with the prescribed nebulizer medication. Never pour more than 6 mL into the cup. The continuous line on the inside surface of the cup indicates the maximum filling level. (When the medication cup contains medication, the cup should remain in an upright position).

CAUTION: To avoid damage to the nebulizer unit, do not use a syringe with needle.



STEP 4

Securely place Cap on Medication Cup.



STEP 5

Attach Mouthpiece or Mask Connector and mask to Nebulizer Body. **NOTE:** Masks are an optional accessory and may be purchased through evo Medical Solutions or your Aeroneb[®] Go dealer.

IMPORTANT ATTENTION

Thank you for purchasing the Aeroneb Go Micropump Nebulizer from evo Medical Solutions! To optimize the performance and life expectancy of your Aeroneb Go device, follow the cleaning instructions carefully as instructed on page 10 of your Aeroneb Go Instruction Manual.

Retain this card with your device for future reference.

CONTINUE ON BACK FOR MORE INSTRUCTIONS



TO OPERATE BATTERY POWERED CONTROLLER

Model #7010



1. Turn the Battery Powered Controller upside down. Slide the battery cover in the direction of the arrow to remove the lid. Put in three (3) "AA" disposable alkaline or lithium batteries, matching them to the plus (+) and minus (-) markings in side the Battery Powered Controller. Replace the cover on the Battery Powered Controller and slide the cover until it locks in place. You can expect at least three (3) hours of operation from a new set of disposable batteries, (up to five (5) hours from high performance batteries).



2. Insert the nebulizer cable connector into the back of the Nebulizer Unit. Slide the cable straight up the nebulizer body.



3. Connect the nebulizer cable to the Aeroneb® Go Battery Powered Controller.



4. Turn on the unit by pressing the "on/off" button on the Battery Powered Controller. The green light on the Battery Powered Controller will light up. Visually verify that aerosol is coming out of the mouthpiece or mask to indicate that the device is functioning properly.

NOTE: (1) If you are using batteries and the green light is flashing, your batteries are low. You may finish your treatment, and then replace the three "AA" batteries. **(2)** If the green light only comes on while depressing the button, immediately replace the three "AA" batteries.



5. Place the mouthpiece between your teeth, with your lips firmly sealed around the mouthpiece. If you use an aerosol mask, place the mask over your mouth and nose. Breathe in and out slowly through your mouth until aerosol formation stops. Do not cover ventilation holes.

NOTE: Aerosol mask is not provided.

NOTE: (1) The Battery Powered Controller is designed to shut off after 16 minutes. If medication still remains in the cup, press the "on/off" button on the Battery Powered Controller to continue your treatment. **(2)** Battery life is dependent upon not only the number of treatments per day, but also the length of each treatment. It is recommended that you always have a spare set of new batteries available to you.



6. Press the "on/off" button on the Battery Powered Controller again to turn the nebulizer off. Disconnect the cable from the Nebulizer Unit by sliding the cable straight down the handset, disassemble Nebulizer Unit and rinse Nebulizer Unit Parts after each use. Wipe dry the connector end of the cable after each use. Clean the Nebulizer Unit and associated parts daily. Do NOT remove the retaining ring under the medication cup.

NOTE: Removal and improper reinsertion of the retaining ring from the underside of the medication cup may cause the unit to leak or malfunction.

TO OPERATE AC/DC POWERED CONTROLLER

Model #7030



1. Insert the AC Powered Controller cable connector into the back of the Nebulizer Unit by sliding the cable straight up the nebulizer body.



2. Plug the AC Powered Controller into a standard AC electrical outlet using the appropriate outlet adapter. The green light on the AC Powered Controller will light up.



3. Visually verify that aerosol is coming out of the mouthpiece or mask to indicate that the device is functioning properly.



4. Place the mouthpiece between your teeth, with your lips firmly sealed around the mouthpiece. If you use an aerosol mask, place the mask over your mouth and nose. Breathe in and out slowly through your mouth until aerosol formation stops. Do not cover the ventilation holes during use.

NOTE: Aerosol mask is not provided.



5. Unplug the AC Powered Controller from the wall to turn it off. Disconnect the cable from the Nebulizer Unit by sliding the cable straight down the handset, disassemble Nebulizer Unit and rinse Nebulizer unit Parts after each use. Wipe dry the Connector end of the cable after each use. Clean the nebulizer unit and associated parts daily. Do NOT remove the retaining ring under the medication cup.

evo

evo Medical Solutions

26378 289th Place
Adel, IA 50003
515.993.5001
515.993.4172 f
800.759.3038 (toll free)
www.evomedical.com

Please read all instructions before using. Refer to your Aeroneb® Go Nebulizer Instruction Manual for more complete instructions.

If you have any questions or problems regarding your Aeroneb® Go nebulizer, contact your local home medical equipment dealer or pharmacy.

Aerogen and Aeroneb are registered trademarks of Aerogen, Ireland Ltd.

©2007 evo Medical Solutions
P/N 22262 Rev G Rx Only



Aerogen (Ireland) Limited,
Galway Business Park,
Dangan,
Galway,
www.aerogen.com

